



STUDENT HOSPITAL CONNECTIONS

General Body Meeting

09/01/2022

This meeting will be recorded!



Our Purpose

To provide students interested in the healthcare field with Atlanta-based opportunities and remove some of the financial burden that comes with traveling to and from local clinical and volunteering opportunities.


How Are We Unique?



**Focus on the
“Experience” aspect
of being Pre-Health**

**Many students struggle
getting experience as a
Pre-Health student**

Our organization gives students the opportunity to gain clinical hours and identify whether the field of healthcare is right for them.



**Cater to students
outside of
Pre-Health**

**Many students love
volunteering**

Our organization gives them the opportunity to get involved.



**Do our best to
relieve the
financial burden
associated with
volunteering**

**Being Pre-Health
can be expensive**

Our organization can have a direct impact for students through our reimbursement program.

RSO Pledge

Adhere to CDC guidelines and to lead by example for GT's community.

01

02

03

04

05

Strive to host every meeting and event virtually.

Limit travel and when it is necessary, wear a mask during travel and follow the CDC's best practices.

Utilize a service such as Engage or similar service to contact trace at events and strive to have all attendees practicing social distancing, as well as masked, at events.

Commit to equitable opportunities for member's involvement, including international and at risk students.

Changes to SHC Due to COVID-19

- Events will be hosted **In-person! (Some hybrid based on the current situation)**
 - *Many members expressed an interest for in-person events so we will do our best host SAFE in-person events.*
 - Subject to change as we closely monitor the pandemic.
 - We are not allowed to require masks, social distancing, etc. BUT, we will **HIGHLY recommend** them at our events!
 - Providing COVID-19 safety and testing resources outside of GT
 - **Email shcgatech@gmail.com or reach out to ANY Executive Member for guidance!**
 - Hosting **more** events and panels:
 - Guest speakers
 - How is healthcare changing as a result of COVID-19? (Virtual Speaker Event with PAC, and AMSA)
 - In-person volunteering with MedShare and the Good Samaritan Health Center
 - Social and fundraising events
 - Expanding our volunteering and clinical opportunities!
 - More later on in this meeting!
-



Executive Board
Introductions

President: Ashley Hong

Year: 3rd

Major: Neuroscience w/ HMED and Leadership Studies
Minors

Involvements: Medical Assistant at Riverparc Internal Medicine, Pharmacy Technician with CVS, Undergraduate Neuroscience Research in Dr. Rahnev's Lab, Pre-Health Mock Interview Ambassador, American Red Cross Volunteer, SEE Learning Volunteer with Emory, AMSA

My Role: Coordinate and organize the operations of SHC, Represent SHC in various Pre-Health committees, Support the SHC Executive Board in their roles and members in their future endeavors, Co-lead SHC Outreach Team



Vice President: Priyanka Akavaram

Year: 4th

Major: Biology, Minor in Global Developments

Involvements: Good Sam Helpline Volunteer, Medical Scribe at EUHM ED, Research with Dr. Harrison, Crisis Text Line volunteer, SEE learning

My Role: Assist the President and all of the other executive board members in events and logistics, SHC Events Planning Committee Co-Lead



Secretary: Kathy Vuong

Year: 3rd

Major: Biology, Health & Medical Sciences minor

Involvements: Pediatric Medical Assistant, Northside Hospital at Gwinnett Student Volunteer, Undergraduate Research in Dr. Ratcliff's Lab, Ubuntu4Youth Board Member, Stamps Health Services Ambassadors Committee Chair, SEE Learning Volunteer with Emory

My Role: Send weekly newsletter, keep track of Good Standing per semester (points and hours), update the website as needed, support the executive board.



Treasurer: Jeff

Year: 2nd

Major: Biology

Involvements: Evolutionary Biology Research in the Ratcliff Lab, SCPC Homecoming and Week of Welcome Chair, AMSA Conference Coordinator, MOVE Committee Chair, Resident Assistant

My Role: Oversee the organization's bank accounts, lead the Outreach Committee, keep track of membership and dues, manage Rideshare and Reimbursements



Hospital Coordinator: Kruthik

Year: 2nd

Major: Neuroscience and Biomedical Engineering

Involvements: Student Alumni Association, Intern at Cure VCP, Research with Dr. Kabir, HealthReach, Residential Assistant, Psychology Assistant at Emory Neuropsychology Program

My Role: Coordinate with volunteer coordinators to get SHC members volunteer positions at each hospital & leading the clinical opportunities committee.



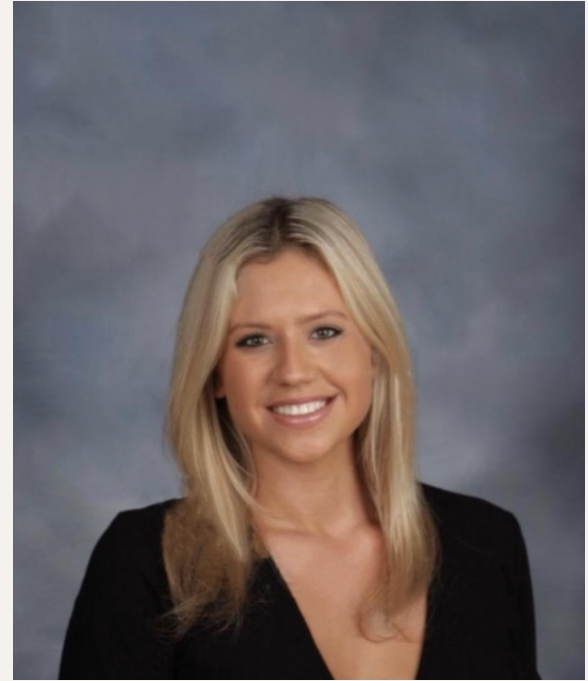
Fundraising Chair: Maria

Year: 4th

Major: Public Policy/Pre-Medical Track, Minor in Health and Medical Sciences

Involvements: Healthy Jacket Peer Educators, Molecular Evolution Core Lab, Executive Round Table, Healthcare Innovations, SEE Learning Program, GT EMS, American Parkinson's Association, Crisis Text Line Student Volunteer, STEM Fellowship, Students for Pediatric Medicine, Pre-Health Mock Interview Ambassadors and ADPi

My Role: I work with the fundraising committee to host various events to help support our members hospital volunteering travel reimbursements



PR Chair: Haritha

Year: 4th

Major: Neuroscience with Pre-Health and Research Option Minors

Involvements: AMSA, Women's Recruitment Team, Medical Assistant Intern & COVID-19 HelplineSOS caller at Good Samaritan, Neuroscience Peer Advisor, GT1000 Team Leader, Research in Dr. Sponberg's Agile System Lab

My Role: I make sure the website and social media is updated and work with the Senior Support Team to help facilitate volunteer opportunities at nursing homes.



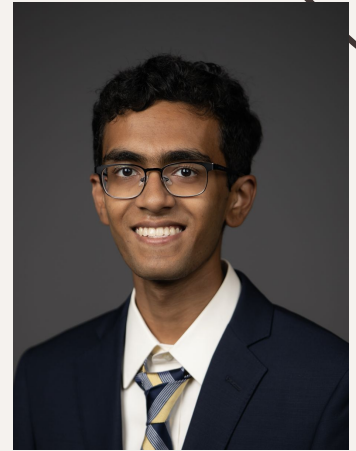
Technology Chair: Ishan Doma

Year: 2nd

Major: BME with Pre-Health Option (CS minor in the works)

Involvements: CHEM 1211 Lab TA, Invention Studio, RoboJackets, SHSA, EMSaT (soon), GTSF, URA, Origami Club, Emory Winship Volunteer, Research at Roy & Kamaleswaran labs

My Role: I improve the functionality of SHC's Portal and troubleshoot any issues that arrive throughout the year.



Today's Meeting Agenda



VOLUNTEERING



COMMITTEES &
TEAMS



PROGRAMS



GOOD
STANDING



DUES



GETTING
INVOLVED

Our Partnering Hospitals



Volunteering Requirements

- Must be 18 years or older to volunteer at AMC or Emory
- Must submit all required paperwork
- Must adhere to respective hospital policies and remain in assigned departments
- Must volunteer 3-4 hours per week (AMC) and 8 hours per month (EMORY)
- Must complete minimum 10 hours of volunteering by the end of the semester that you start volunteering
 - If absent, notify respective hospital coordinators in advance (and anyone else required at the hospital)
 - Member who do not communicate adequately and complete their volunteer hours will be placed on the blacklist in subsequent semesters.

Applying: Wellstar AMC and Emory

- Each hospital has slightly different applications, but expect:
 - An application with basic information and short essays
 - An interview
 - Orientation
 - Proof of vaccinations (including COVID-19 vaccination!)
- Other requirements depending on hospital:
 - Medical release
 - Background checks
 - Privacy compliance training
- **Be ready for hospital volunteering to open back up!**
 - Have immunizations, release forms, resumes, etc. ready to go!
- **Visit our website for detailed instructions for individual requirements and how to apply!** <http://gtshc.weebly.com/>

Emory Winship Volunteering

- Emory Winship Cancer Institute has many cancer-related departments including:
 - Radiation Oncology
 - Ambulatory Infusion Center
 - Medical Oncology Clinic
 - Radiology Department
- General volunteer roles include:
 - Hospitality
 - Runner
 - Clerical/Administrative
 - Welcome Desk/Concierge
 - Musicians/Artists
- **The longer you volunteer, the more involved the nurses and doctors will let you be!**
- Click here for more details: <http://gtshc.weebly.com/emory-volunteering.html>



EMORY
WINSHIP
CANCER
INSTITUTE
National Cancer Institute-Designated
Comprehensive Cancer Center

AMC Volunteering

- AMC has a wide range of departments that need volunteers including but not limited to:
 - Integrative Health
 - Comfort Advocacy
- General volunteer roles include:
 - Clerical shifts
 - Running lab items around the hospital
 - Comfort card rounding
 - Planning events
 - Assisting Nurses with their non-medical duties
 - Building connection and improving their skills through their roles
- **The longer you volunteer, the more involved the nurses and doctors will let you be!**
- Click here for more details: <http://gtshc.weebly.com/amc-volunteering.html>



Our Response to COVID-19



SHC Outreach Team

Aids underserved communities during the 2020 COVID-19 pandemic by helping to improve, regulate, and expand the operations of the organization.



Expansion of Opportunities

Shadowing
Non-clinical experiences
Training
Other Volunteering



SHC Senior Support Team

A program that connects GT student to senior in various nursing homes launched with the purpose of providing the elderly with emotional support during these trying times.

SHC Outreach Team

Releasing Committee Application
September 12th!

01

SHC Week

A week of events hosted every semester dedicated to SHC's core values of volunteerism, social support, and wellness

02

Service

Planning and executing service projects for SHC members!

03

Outreach

Represent SHC at tabling events such as Org Fair and help recruit the next generation of SHC members

04

Impact

Work to analyze and assess the impact of SHC service projects within the Georgia Tech and Atlanta community

SHC Senior Support Team

Releasing Committee Application
September 12th!

01

Supporting seniors who may be facing feelings of loneliness and isolation due to the COVID-19 pandemic.

02

Providing company and a source of emotional support during these trying times.

03

Expanding to more nursing home and developing new projects to support them.

Committees

Want to get more involved
with SHC?

1

FUNDRAISING

Hold fundraising events, proceeds nights, and more to support our reimbursement program and philanthropy events

2

CLINICAL OPPORTUNITIES

Help maintain and expand our connections with volunteering and clinical opportunities in and around the Atlanta area

3

EVENT PLANNING

Plan fun events like socials and panels to engage our members and help them relax!

Fundraising Committee

**Releasing Committee Application
September 12th!**

Increasing Reimbursement

Currently, our reimbursement program is only active in the Fall and Spring semesters, but we would like to expand the program to year-long and expand to help offer other resources or programs!

Supporting SHC's Philanthropy Projects

SHC believes in supporting our hospitals and communities outside of volunteering and educating our members about issues in healthcare.

Clinical Opportunities Committee

Releasing Committee Application
September 12th!



Research

Finding volunteer, shadowing, internship, and other clinically relevant opportunities for our members



Outreach

Reaching out to clinics, clubs, and organizations for SHC partnerships and volunteer opportunities



Updates

Updating SHC members on any important information or opportunities at their respective hospital



Organization

Creatively finding ways to make the opportunities list organized and easy to use

Event Planning Committee

**Releasing Committee Application
September 12th!**

Socials & Panels

Host events that will allow members to sit back and relax! Socials help members get to know one another and panels provide valuable information for pre-health students (healthcare issues, work-life balance, self-care tips and suggestions).

Member Engagement

Increase member engagement by planning fun activities such as game night and various social events! We are excited to transition to in-person activities this semester after being virtual for so long!

Our Programs



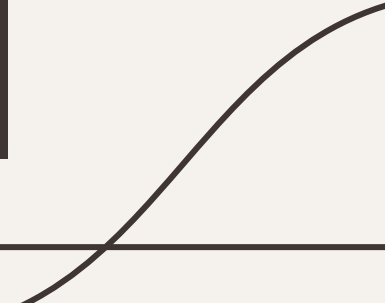
CARPOOL

Aims to pair drivers and riders who volunteer at the same places during the same shifts. Helps riders identify other riders they can carpool with to cut costs and ensure full reimbursement!



REIMBURSEMENT

Allows riders to receive reimbursements for transportation costs to and from volunteer opportunities

A decorative curved line in the bottom right corner of the slide, starting from the bottom edge and curving upwards and to the left.

SHC Carpool Program

- The carpool program matches drivers and riders going to the same hospital/volunteer event at the same time
 - If no driver is found, riders going to the same hospital/volunteering shift will be matched so that they can share an Uber, Lyft, etc. and apply for reimbursement through our Reimbursement Program
- Interested members should fill out the Carpool form once volunteering opens up
- Cars will be paired by the Treasurer. Each member is expected to communicate any schedule changes and adhere to the driver's car rules
- **The carpool program will be reinstated this semester with precautions made to make sure everyone involved is safe**

SHC Reimbursement Program

- The reimbursement program allows you to get reimbursed for rides to and from hospital/volunteering shifts through transportation such as **Uber, Lyft, or Marta**.
 - This significantly reduces the cost of your rides → these companies charge for vehicles and not the number of passengers
- **How to become eligible?**
 - At the beginning of each semester, members have the choice of paying \$10 dues for no transportation needed and \$20 dues for transportation needed.
 - You will ONLY be eligible for reimbursement if you pay transportation dues for AT LEAST two semesters. In other words, you will be able to enter the reimbursement program during your 2nd semester of paying the \$20 dues.
 - **Must be in Good Standing!** - more on this soon!

Requesting Reimbursements

All requests for reimbursements
must be submitted by Friday,
December 16th @ 11:59 PM.

- Each transportation mode has its own respective form you must fill out to request reimbursements as well as different timelines:
 - **Uber/Lyft:** \$10 cap per person per week, expect reimbursements during the first week of the month AFTER you submit your request (if request submitted in August, expect your reimbursement the first week of September)
 - **Carpool:** Drivers receive \$10 per 3 round-trips taking at least one other member, this pays for gas AND rewards drivers for their time in coordinating rides with other members
 - **Marta:** Paid at once at the end of the semester after submission of the Volunteer Hours Log, \$10 cap per person per week
 - We will reimburse you through **Venmo**.
 - If you travel in groups or use the Carpool program, only one group member needs to submit for reimbursement and we will distribute reimbursement among all group members!
 - For more detailed information, visit this page on our website: [click here](#)
-

Good Standing - Fall 2022 Update

ACQUIRING POINTS

Earn **at least 3** participation points throughout the semester by attending events or other activities

PAYING DUES

Dues are \$10 for all members this semester; If you need transportation reimbursements or believe you may need it in a future semester, you may add the extra \$10 (totaling \$20 = transportation dues) at any point during the semester.

VOLUNTEERING HOURS

Complete **at least 10** hours of volunteering
Can include: clinical, non-clinical, in-person, or virtual

WHY IS GOOD STANDING IMPORTANT?

Maintaining Good Standing allows you to be eligible for reimbursements!

Using our Member Portal!

Purpose: Provide members with access to real-time data about points, volunteer hours, and events

- **How do you get access?**

- Returning Members:

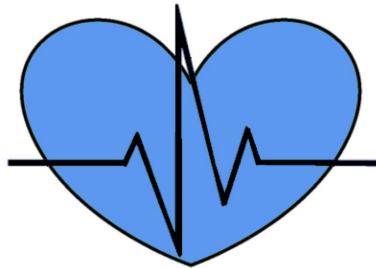
- Returning members will receive an email after this meeting with a link to update your information! After this, you will be able to access the portal like last semester with the same password.

- New Members:

- After acceptance into SHC, you will be emailed a form to update your information, which includes an activity waiver you must sign. You will also receive your password!
-

How you use the new portal?

You can find the portal website link in the Resources page of the SHC website!



Student Hospital Connections

Password

LOGIN →

FORGOT PASSWORD?

SHC Member Portal

Ishan Doma's Information

Volunteer Hours:
7.5 Hours

LOG HOURS

Membership Dues:
\$10 Paid

Dues are \$20 with rideshare and \$10 without it

Member Points:
4 Points

LOG POINTS

Good Standing:
In Progress

Good standing is achieved by earning 10 hours and 3 points, as well as paying dues



Student Hospital Connections

Events Calendar

Event	Date/Time	Location
SHC Week Paint with SHC - 1 point	5 May 2023 12:00	Tech Green
SHC Week Spring Social - 1 point	6 May 2023 18:00	Culc 255
SHC x AMSA Scarf Making Event - 1 point/hour (max 2)	7 May 23 1:00	West Village

Our Point System

All points must be submitted by Friday, December 16th @ 11:59 PM.

01

Point Requirement

Members must earn 3 points per semester.

02

How to Earn Points

A GBM guarantees 1 point! Exec will decide and communicate points for other events.

03

Submit your Points!

Fill out the form on the member portal! Your points should update immediately!

04

Didn't Get 3 Points?

You can remain in the club, but will need to earn 3 points to be allowed to receive reimbursements again.

Membership Dues - Fall 2022

- Base dues are **\$10 per semester!** This includes a t-shirt, access to membership benefits, Carpool/Reimbursement Program, volunteer opportunities, and events!
 - If you would like to participate in the Reimbursement Program, the dues are **\$20 per semester**. This will allow you to request and receive reimbursements for your transportation throughout the entire semester in addition to what we offer in base dues (mentioned above)!
 - Please keep in mind that you **must** have paid the \$20 transportation dues for **AT LEAST 2 semesters** before you are eligible for these programs. They do not have to be 2 semesters in a row (if you were to skip a semester of membership due to internship or co-op or COVID-19, that would be completely fine).
 - You can pay base dues (\$10) for membership and add on the extra \$10 later if you need reimbursement or expect you will need it in a future semester!
 - Please pay dues to the SHC **Venmo** → **@GTStudentHospitalConnections**
 - If you do not have a Venmo, please create an account. We would like to standardize this method of payment in our organization as much as possible.
-

Volunteer Hours Log

- We encourage you to keep track of your hours using our volunteer hours log template!
 - Made a template to keep track of your volunteering hours through SHC provided opportunities:
 - Can submit this template for MARTA reimbursements
 - Will need to submit your hours to the portal at the end of the semester: **Friday, December 16th by 11:59 PM**
 - **Template:** [click here](http://gtshc.weebly.com/resources.html) → gtshc.weebly.com/resources.html
 - Under “Volunteer Hours Log”
 - Volunteer hour requirement: **10 hours**
-

Joining & Getting Involved in SHC

New Members

SEPTEMBER	WEEK 1	WEEK 2	WEEK 3
TIMELINE FOR NEW MEMBERS	First GBM; application goes out on Sept. 1st!	Applications are due on Sept. 11th!	Decisions go out on Sept. 15th! Dues & waivers due Sept. 16th Committee applications go out on Sept. 12th! Committee applications due on Sept. 16th

Scan this code to fill out
our **NEW MEMBER**
Application!



Application Link: <https://forms.gle/ajmvbzDpLeCy16Nj8>

Joining & Getting Involved in SHC

Returning Members

SEPTEMBER	WEEK 1	WEEK 3	
TIMELINE FOR NEW MEMBERS	First GBM; returning member form emailed on Sept. 1st	Returning member form due on Sept. 11th . Dues are due Sept. 16th	Committee applications go out on Sept. 12th Committee applications due on Sept. 16th

**Returning Member emails will be sent immediately after
this GBM!**

SHC Week

Next Week: 09/5-09/9

Purpose: To hosting various events each day that embody the goals of SHC: **social support, volunteerism and health and wellness.**

SHC Week Events: 9/5-9/6



Monday 9/5: SHC Social

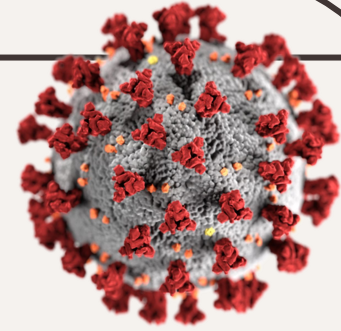
- Come out to the SHC Social Event where you can meet your fellow SHC members, play lots of fun games (for prizes), and light snacks and refreshments!
- **Location: CoC 017 from 5:30-7:30 PM**

Tuesday 9/6: Campus Kitchen Volunteering

- Come out and get a taste of the volunteer opportunities SHC offers its members while giving back to the community! We will be packing leftover campus meals to donate to homeless shelters around Atlanta!
- **Location: West Village Dining Hall 1st Floor 7-8 PM**



SHC Week Events: 9/7-9/8



Wednesday 9/7: COVID-19 and Rural Health Speaker Event

- Come listen how COVID has affected hospitals in the rural Georgia. We will have guest speakers from Phoebe Putney Hospital to discuss their experiences and hold a Q&A session!
- **Location:** Virtual → Zoom Link: ()

Thursday 9/8: SHC X EXPLORE Information Session



- Join us virtually to learn more about SHC, ask any questions you may have, and meet current SHC members! We will start off with a fun icebreaker, present some info about SHC and end it off with a SHC member panel! It will be super informative!
- This is primarily for prospective SHC members, but current SHC members are welcome to attend!

SHC Week Event: 9/9

Friday 9/9: SHC X Health Initiatives: Mental Health while Pre-med

- Discussion of what is exciting & worrying about being pre health
- Learn about self care, why it's important, and how we can practice it while being Pre-Med
- Rotate through fun self care activity stations focusing on the different components of health (physical, social, emotional, spiritual)
 - Physical: body scan meditation
 - Social: speed friending
 - Emotional: loving kindness meditation
 - Spiritual: gratitude journaling

Stay Up-to-Date!



WEBSITE <http://qtshc.weebly.com/>

Our website has everything you need to know about being an SHC member, has updates for hospitals, forms you need to fill out, and even some COVID-19 testing resources!

SOCIAL MEDIA IG: [@gatechshc](https://www.instagram.com/gatechshc)

Follow us on social media! We post reminders about meetings and events, volunteer opportunities, and more!

EMAIL shcgatech@gmail.com

If you have any questions about SHC and our involvements, feel free to reach out to us!

ENGAGE PAGE [Click here!](#)

Our updated Engage page will house information about our events, links to our social media, applications, etc!

CALENDAR: [Click here](#) to add it onto your personal calendar!

Thanks for Attending!



**Fall 2022
Feedback Form**

If you are a **current or interested member**, please fill out the feedback form (QR code) Points Form to earn points for coming to this GBM! After filling out the form, screenshot the end screen and save it! Once you get your member password (after being accepted into SHC or renewing your membership), make sure you submit your photo using the points form on the portal!