

Student Hospital Connections

# General Body Meeting

September 3rd, 2020

**This meeting will be recorded!**

# Our Purpose

To provide students interested in the healthcare field with Atlanta-based opportunities and remove some of the financial burden that comes with traveling to and from local clinical and volunteering opportunities.

# How Are We Unique?

**Focus on the  
“Experience” aspect of  
being Pre-Health**

**Many students struggle  
getting experience as a  
Pre-Health student**

Our organization gives students the opportunity to gain clinical hours and identify whether the field of healthcare is right for them.

**Cater to students  
outside of  
Pre-Health**

**Many students love  
volunteering**

Our organization gives them the opportunity to get involved.

**Do our best to  
relieve the financial  
burden associated  
with volunteering**

**Being Pre-Health can  
be expensive**

Our organization can have a direct impact for students through our reimbursement program.

# RSO Pledge

Adhere to CDC guidelines and to lead by example for GT's community.

01

02

03

04

05

Strive to host every meeting and event virtually.

Limit travel and when it is necessary, wear a mask during travel and follow the CDC's best practices.

Utilize a service such as Engage or similar service to contact trace at events and strive to have all attendees practicing social distancing, as well as masked, at events.

Commit to equitable opportunities for member's involvement, including international and at risk students.

# Changes to SHC Due to COVID-19

- All events will be hosted VIRTUALLY
  - *In-Person*: only drop-off or pick-up events with a virtual component to them!
    - Subject to change as we closely monitor the pandemic.
- Providing COVID-19 safety and testing resources outside of GT
  - [Click here!](#)
- Hosting **more** events and panels:
  - Guest speakers
  - Tackling health disparities in the healthcare fields
  - How is healthcare changing as a result of COVID-19
  - Virtual mask making event - donate masks to local free clinics, homeless shelters, etc.
- Expanding our volunteering and clinical opportunities!
  - More later on in this meeting!



# **Executive Board Introductions**

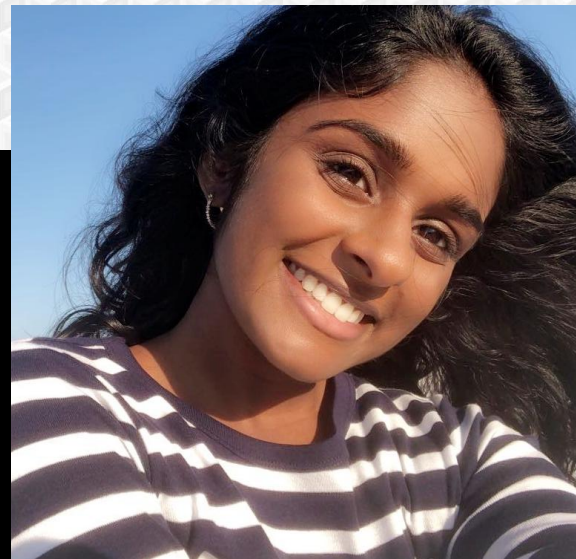
# President: Ritika Chanda

**Year:** 3rd

**Major:** Neuroscience w/ HMED and Leadership Studies  
Minors

**Involvements:** AMSA, Cognitive Neuroscience research at Dr. Schumacher's CoNTRoL lab, ATL Tanishq, Clinical Caller for HelplineSOS, Medical Intern at the Good Samaritan Health Center, Volunteer at WellStar AMC

**My Role:** Coordinate and organize the operations of SHC, Represent SHC in various Pre-Health committees, Support the SHC Executive Board in their roles and members in their future endeavors, Co-lead SHC HelplineSOS Outreach Team



# Vice President: Ishani Desai

**Year:** 3rd

**Major:** Biochemistry

**Involvements:** AMSA, Honor Advisory Council, Arts in Health Volunteer at Emory, Good Sam Helpline Volunteer, Research with Dr. Lieberman, Red Cross Blood Ambassador

**My Role:** SHC Senior Support Team Lead, Assist the President and all of the other executive board members in various endeavors





# Secretary: Caroline Orange

**Year:** 3rd

**Major:** Chemical & Biomolecular Engineering, minor in HMED

**Involvements:** AICHE, CHBE Student Ambassadors, Greek Life, research with Dr. Prausnitz, currently interning at DuPont!

**My Role:** send emails, oversee social media, keep track of points for the semester, assist William with Fundraising Committee starting this semester



# Treasurer: Hannah Shin

**Year:** 2nd

**Major:** Biology with HMED Minor

**Involvements:** Biology education research with Dr. Colin Harrison, Undergraduate Research Ambassadors, Good Samaritan Helpline Volunteer and Medical intern, GT Tri-Beta, STAMPS Health Services Ambassadors, GT Emergency Medical Services

**My Role:** Oversee the organization's bank accounts, lead the Events Planning Committee, keep track of membership and dues, manage Rideshare and Reimbursements



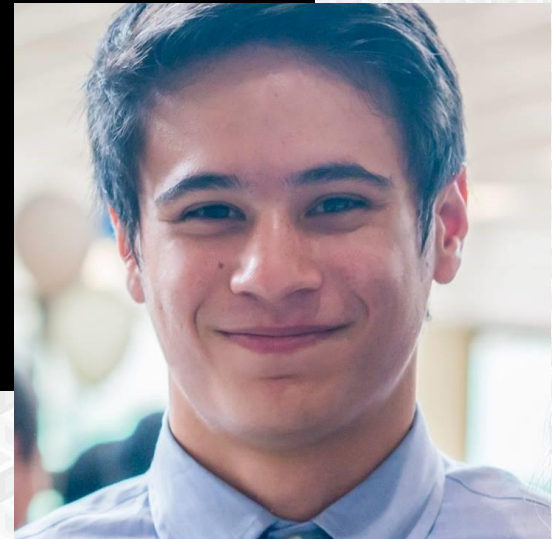
# Hospital Coordinator: Patrick Kramer

**Year:** 3rd

**Major:** Biology

**Involvements:** AMSA, Volunteer at Emory Winship, Intern and Clinical Caller at Good Samaritan Health Center, Research in Brown Lab, Intern at Pediatric Brain Tumor Foundation

**My Role:** Coordinate with volunteer coordinators to get SHC members volunteer positions at each hospital & co-lead the SHC HelplineSOS Outreach team w/ Ritika



# Fundraising Chair: William York

**Year:** 3rd

**Major:** BME with Pre-Health and Research Option concentrations

**Involvements:** GT EMS, Club Baseball, URA, ASB, GT Red Cross, SHS Ambassadors, and Research with Dr. Botchwey

**My Role:** I work with the fundraising committee to host various events to help support our members hospital volunteering travel reimbursements



# Today's Meeting Agenda



**VOLUNTEERING**



**COMMITTEES & TEAMS**



**PROGRAMS**



**GOOD STANDING**



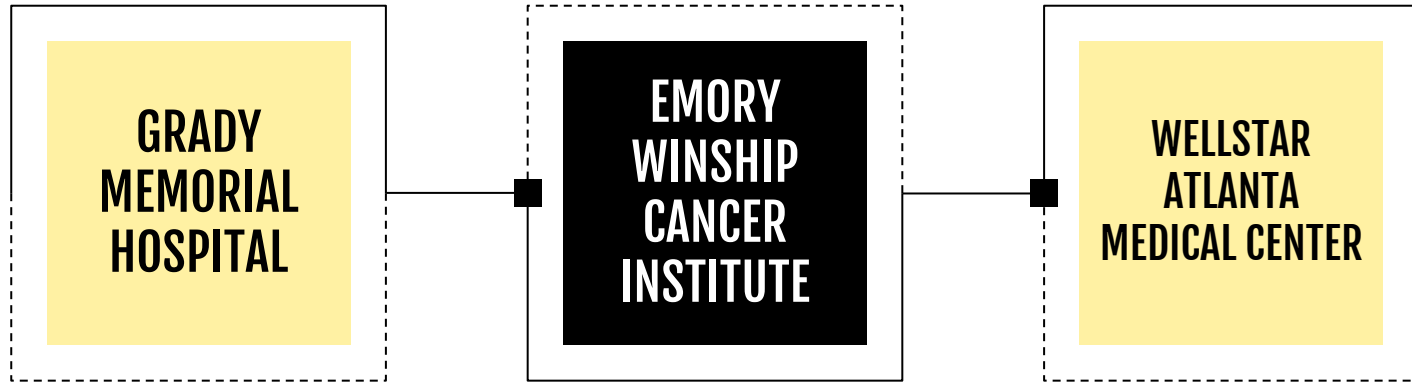
**DUES**



**GETTING INVOLVED**

# Our Hospitals

**EMORY**  
HEALTHCARE



# Volunteering Requirements: Grady, AMC, Emory

- Must be 18 years or older to volunteer at Grady, AMC or Emory
- Must submit all required paperwork
- Must adhere to respective hospital policies and remain in assigned departments
- Must volunteer 3-4 hours per week (GRADY and AMC) and 8 hours per month (EMORY)
- Must complete minimum 21 hours of volunteering by the end of the semester that you start volunteering
  - If absent, notify respective hospital coordinators in advance (and anyone else required at the hospital)
  - Member who do not communicate adequately and complete their volunteer hours will be placed on the blacklist in subsequent semesters.

# Applying: Grady, AMC, and Emory

- Each hospital has slightly different applications, but expect:
  - An application with basic information and short essays
  - An interview
  - Orientation
  - Proof of vaccinations
- Other requirements depending on hospital:
  - Medical release
  - Background checks
  - Privacy compliance training
- **Be ready for hospital volunteering to open back up!**
  - Have immunizations, release forms, resumes, etc. ready to go!
- **Visit our website for detailed instructions for individual requirements and how to apply!** <http://gtshc.weebly.com/>



# Grady Volunteering

- Grady has a wide range of departments that need volunteers including but not limited to:
  - Language
  - Cancer Center
  - Nursing Units
  - Food in Medicine
- General volunteer roles include:
  - Fulfilling patient requests
  - Assisting nurses
  - Escorting, running
  - Clerical and inventory work
- **The longer you volunteer, the more involved the nurses and doctors will let you be!**
- Click here for more details: <http://qtshc.weebly.com/grady-volunteering.html>



# AMC Volunteering

- AMC has a wide range of departments that need volunteers including but not limited to:
  - Integrative Health
  - Comfort Advocacy
- General volunteer roles include:
  - Clerical shifts
  - Running lab items around the hospital
  - Comfort card rounding
  - Planning events
  - Assisting Nurses with their non-medical duties
  - Building connection and improving their skills through their roles
- **The longer you volunteer, the more involved the nurses and doctors will let you be!**
- Click here for more details: <http://gtshc.weebly.com/amc-volunteering.html>



# Emory Winship Volunteering

- Emory Winship Cancer Institute has many cancer-related departments including:
  - Radiation Oncology
  - Ambulatory Infusion Center
  - Medical Oncology Clinic
  - Radiology Department
- General volunteer roles include:
  - Hospitality
  - Runner
  - Clerical/Administrative
  - Welcome Desk/Concierge
  - Musicians/Artists
- **The longer you volunteer, the more involved the nurses and doctors will let you be!**
- Click here for more details: <http://qtshc.weebly.com/emory-volunteering.html>



# Important Steps When Applying

When you **do** apply:

- It is crucial that you keep everything updated!
  - We will have forms that help us keep track of where you are in the application so that we can pass that along to the volunteer coordinators.
- **You** are responsible for making sure your application, interview, and volunteer etiquette are up to GT and SHC standards.
  - We try to make the process as easy as possible, but SHC only sends the *best* volunteers, so you *must* show that you are a **passionate** volunteer candidate.
- **Remember to use our website! It has a detailed description of each application process and many other resources!**

**<http://gtshc.weebly.com/>**

# Our Response to COVID-19



## SHC HelplineSOS Outreach Team

Aids underserved communities during the 2020 COVID-19 pandemic by helping to improve, regulate, and expand the operations of the HelplineSOS coronavirus support hotline .



## Expansion of Opportunities

Shadowing  
Internships  
Training  
Other Volunteering



## SHC Senior Support Team

A virtual program that connects GT student to senior in various nursing homes launched with the purpose of providing the elderly with emotional support during these trying times.

# COVID-19 Volunteering

- Hospitals are **not** accepting volunteers right now.
- SHC has created a living volunteer opportunities document!
  - Consists of virtual, non-virtual, long-term, short-term, event-based opportunities for volunteering, scribing, internships, etc.
  - Tons of work went into consolidating these opportunities for SHC members **only**.
    - SHC members will get access to this document after acceptance and paid dues.
    - Sharing of this document with anyone else (regardless if they are an SHC member) will result in forfeiture of access
- With any in-person volunteering, SHC members are expected to use safe COVID-19 practices.
- Look into opportunities you are most comfortable with! The list is diverse with that intention in mind!

# SHC HelplineSOS Outreach Team

01

## Analysis

Conducting analysis of caller data to present trends of the helpline and to better understand the course of the pandemic.

02

## Marketing

Generating metrics that Sostento, Inc can use for donors and/or potential clinics.

03

## Outreach

Reaching out to potential clinics to communicate about HelplineSOS statewide and nationwide.

04

## Impact

Assessing the impact of HelplineSOS on the Atlanta community through surveys and analysis of trends.

# SHC Senior Support Team

01

Supporting seniors who may be facing feelings of loneliness and isolation due to the COVID-19 pandemic.

02

Providing company and a source of emotional support during these trying times.

03

Expanding to more nursing home and developing new projects to support them.

**APPLICATION TO JOIN  
COMING OUT MID-SEPT!**



# Committees

Want to get more involved  
with SHC?

1

## FUNDRAISING

Hold fundraising events, proceeds nights, and more to support our reimbursement program and philanthropy events

2

## CLINICAL OPPORTUNITIES

Help maintain and expand our connections with volunteering and clinical opportunities in and around the Atlanta area

3

## EVENT PLANNING

Plan fun events like socials and panels to engage our members and help them relax!

# Fundraising Committee

## Increased Reimbursement

Currently, our reimbursement program is only active in the Fall and Spring semesters, but many of our members also volunteer during the Summer semester, so we would like to expand the program to year-long.

## Supporting SHC's Philanthropy Projects

SHC believes in supporting our hospitals and communities outside of volunteering and educating our members about issues in healthcare.

**APPLICATION TO JOIN  
COMING OUT MID-SEPT!**

# Clinical Opportunities Committee

## Research



Finding volunteer, shadowing, internship, and other clinically relevant opportunities for our members

## Outreach



Reaching out to clinics, clubs, and organizations for SHC partnerships and volunteer opportunities

## Updates



Updating SHC members on any important information or opportunities at their respective hospital

## Organization



Creatively finding ways to make the opportunities list organized and easy to use

**APPLICATION TO JOIN  
COMING OUT MID-SEPT!**

# Event Planning Committee

## Socials and Panels

Host events that will allow members to sit back and relax! Socials help members get to know one another and panels provide valuable information for pre-health students (healthcare issues, work-life balance, self-care tips and suggestions).

## Member Engagement

Increase member engagement by planning fun activities such as game night! These will be virtual this semester, but we look forward to face to face activities in the future.

# Our Programs



## RIDESHARE

Aims to pair drivers and riders who volunteer at the same places during the same shifts and to help riders identify other riders who they can carpool with to cut costs and ensure full reimbursement



## REIMBURSEMENT

Allows riders to receive reimbursements for transportation costs associated with fulfilling clinical opportunities

# SHC RideShare Program

- The RideShare program matches drivers and riders going to the same hospital at the same time
  - If no driver is found, riders going to the same hospital shift will be matched so that they can share an Uber, Lyft, etc. and apply for reimbursement through our Reimbursement Program
- All members should fill out the RideShare form once volunteering opens up
  - Rider and drivers will be paired on a rolling basis, and cars will fill up so fill out the form early!
- Cars will be paired by the Hospital Coordinator, and each member is expected to not hold up others, communicate any schedule changes, and adhere to the driver's car rules
  - *Failure to adhere to the RideShare rules will result in removal from the RideShare program*
- For more information about the program: [click here!](#)

# SHC Reimbursement Program

- The reimbursement program allows you to get reimbursed for rides to and from hospital shifts through transportation such as Uber, Lyft, or Marta.
  - This significantly reduces the cost of your rides → these companies charge for vehicles and not the number of passengers
- How to become eligible?
  - At the beginning of each semester, members have the choice of paying \$10 dues for no transportation needed and \$20 dues for transportation needed.
  - You will ONLY be eligible for reimbursement if you pay transportation dues for AT LEAST two semesters. In other words, you will be able to enter the reimbursement program during your 2nd semester of paying the \$20 dues.
  - **Must be in Good Standing!** - more on this soon!

# Requesting Reimbursements

- Each transportation mode has its own respective form you must fill out to request reimbursements as well as different timelines:
  - Uber/Lyft: \$10 cap per person per week, expect reimbursements during the first week of the month AFTER you submit your request (if request submitted in August, expect your reimbursement the first week of September)
  - RideShare: Drivers receive \$10 per 3 round-trips taking at least one other member, this pays for gas AND rewards drivers for their time in coordinating rides with other members
  - Marta: Paid at once at the end of the semester after submission of the Volunteer Hours Log, \$10 cap per person per week
- We will reimburse you through **Venmo**.
- If you travel in groups or use the RideShare program, only one group member needs to submit for reimbursement and we will distribute reimbursement among all group members!
- For more detailed information, visit this page on our website: [click here](#)



# Good Standing

## ACQUIRING POINTS

Earning at least 3 participation points throughout the semester by attending events or other activities.

## PAYING DUES

Either paying Transportation Dues OR Regular Dues in a timely fashion.

## VOLUNTEERING HOURS

Completing a total of 21 hours of volunteering at your hospital each semester (after your first semester on SHC).

## WHY IS GOOD STANDING IMPORTANT?

Maintaining Good Standing allows you to be eligible for reimbursements!

# Our “Point” System

01

## Point Requirement

Members must maintain 3 “points” per semester.

02

## How to Earn Points

A GBM guarantees 1 point! Exec will decide and communicate points for other events.

03

## Submit your Points!

Fill out the form on our website under “Resources”.

04

## Didn't Get 3 Points?

You can remain in the club, but will need to earn 3 points to be allowed to receive reimbursements again.

# Membership Dues

- Base dues are **\$10 per semester!** This includes a t-shirt, access to membership benefits, volunteer opportunities, and events!
- If you would like to participate in the RideShare and Reimbursement Program, the dues are **\$20 per semester.** This will allow you to request and receive reimbursements for your transportation throughout the entire semester in addition to what we offer in base dues! This includes a t-shirt, access to membership benefits, volunteer opportunities, and events!
  - Please keep in mind that you must have paid the \$20 transportation dues for **AT LEAST 2 semesters** before you are eligible for these programs. They do not have to be 2 semesters in a row (if you were to skip a semester of membership due to internship or co-op or COVID-19, that would be completely fine).
- Please pay dues to the SHC **Venmo** @GTStudentHospitalConnections
- If you do not have a Venmo, please create an account. We would like to standardize this method of payment in our organization as much as possible.

# Volunteer Hours Log

- We are encouraging you to keep track of your hours!
  - Made a template to keep track of your volunteering hours through SHC provided opportunities:
    - Can submit this template for MARTA reimbursements
    - Will need to submit your hours at the end of the semester: **Friday, November 27, 2020 by 11:59 PM** (more on submission in the future meetings)
    - You may also download a secondary template and use it to keep track of your non-SHC volunteering hours!
  - **Template:** [click here](#) → Website page where the Volunteer Hours Log is located

# Joining & Getting Involved in SHC New Members

SEPTEMBER	WEEK 1	WEEK 2	WEEK 3	WEEK 4
TIMELINE FOR NEW MEMBERS	First GBM & applications go out on Sept. 3!	Applications due Sept. 10!	Application decisions & committee applications go out on Sept. 14!	Dues, waiver & committee applications due Sept. 25!

Scan this code to fill out our **NEW MEMBER Application!**



**Application Link:** <https://forms.gle/EqfWiU1AjQcBSdwPA>

# Joining & Getting Involved in SHC Returning Members

SEPTEMBER	WEEK 1	WEEK 2	WEEK 3	WEEK 4
TIMELINE FOR RETURNING MEMBERS	First GBM on Sept. 3rd!	Returning Member Form and Dues due Sept. 18!	Committee applications go out on Sept. 14!	Committee applications due Sept. 25!

Scan this code to fill out our **RETURNING MEMBER Form!**



**Form Link:** <https://forms.gle/3hmLhWyC2tm6FcGN6>

# Stay Up-to-Date!



## WEBSITE

<http://gtshc.weebly.com/>

Our new and improved website has everything you need to know about being an SHC member, has updates for hospitals, forms you need to fill out, and even some COVID-19 testing resources!

## EMAIL

[shcgatech@gmail.com](mailto:shcgatech@gmail.com)

If you have any questions about SHC and our involvements, feel free to reach out to us!

## SOCIAL MEDIA

Follow us on social media! We post reminders about meetings and events, volunteer opportunities, and more!

**Instagram:**  
[@gatechshc](#)  
**Facebook:**  
[Click here!](#)

## ENGAGE PAGE

[Click here!](#)

Our updated Engage page will house information about our events, links to our social media, applications, etc!

**CALENDAR:** [Click here](#) to add it onto your personal calendar!

# Thanks for Attending!



If you are a **current member**, please fill out the Points Form to earn points for coming to this GBM! This form can also be found on the Resources page of our website!

If you are an **interested member** applying Fall 2020, we will give you the opportunity to fill out this form after being accepted into SHC!

**Points Form Link:** <https://forms.gle/AVR6puGRTAR5qFBj7>