

Student Hospital Connections

General Body Meeting

February 3rd, 2021

This meeting will be recorded!

Our Purpose

To provide students interested in the healthcare field with Atlanta-based opportunities and remove some of the financial burden that comes with traveling to and from local clinical and volunteering opportunities.

How Are We Unique?

**Focus on the
“Experience” aspect of
being Pre-Health**

**Many students struggle
getting experience as a
Pre-Health student**

Our organization gives students the opportunity to gain clinical hours and identify whether the field of healthcare is right for them.

**Cater to students
outside of
Pre-Health**

**Many students love
volunteering**

Our organization gives them the opportunity to get involved.

**Do our best to
relieve the financial
burden associated
with volunteering**

**Being Pre-Health can
be expensive**

Our organization can have a direct impact for students through our reimbursement program.

RSO Pledge

Adhere to CDC guidelines and to lead by example for GT's community.

01

02

03

04

05

Strive to host every meeting and event virtually.

Limit travel and when it is necessary, wear a mask during travel and follow the CDC's best practices.

Utilize a service such as Engage or similar service to contact trace at events and strive to have all attendees practicing social distancing, as well as masked, at events.

Commit to equitable opportunities for member's involvement, including international and at risk students.

Changes to SHC Due to COVID-19

- Events will be hosted **virtually AND in-person**
 - Many members expressed an interest for in-person events so we will do our best host SAFE in-person events.
 - Subject to change as we closely monitor the pandemic.
- Providing COVID-19 safety and testing resources outside of GT
 - Email **shcgatech@gmail.com** or reach out to ANY Executive Member for guidance!
- Hosting **more** events and panels:
 - Guest speakers
 - How is healthcare changing as a result of COVID-19? (Virtual Speaker Event with PAC, SHS Ambassadors and AMSA)
 - Making meal kits for Mercy Care Atlanta → Late March!
 - Volunteering with Campus Kitchens and GT Red Cross Club
- Expanding our volunteering and clinical opportunities!
 - More later on in this meeting!

COVID-19 Protocol for SHC In-Person Events

- Whenever possible, we will adhere to a sign-up policy for events.
 - For contact tracing purposes!
- Members will be required to wear masks at ALL times during the event!
- Members attending will be required to obtain a COVID-19 test with GT's surveillance testing within 72 hours BEFORE the event.
- Members will be required to show a negative test result BEFORE the event.
- If members begin exhibiting COVID-19 symptoms after negative result, they will not be allowed to attend. We'll find alternatives, so you still have the opportunities to get a point for the event!
- Members will be **STRONGLY** encouraged to get a COVID-19 test at least 48 hours after the event.
 - If members receive a positive result, we ask that members communicate the result with us so we can inform SHC members who were potentially exposed.



Executive Board Introductions

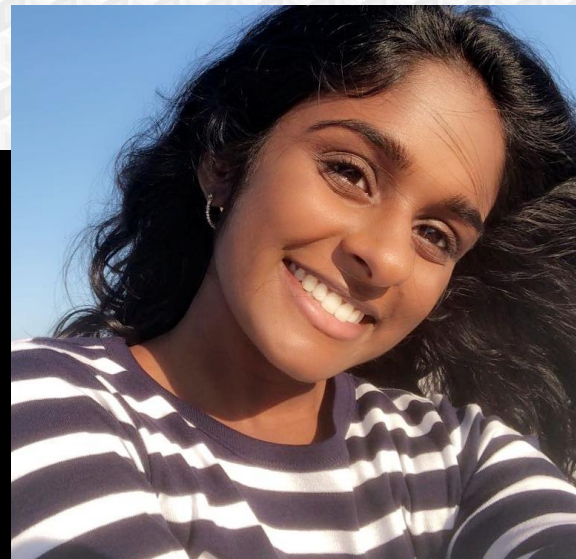
President: Ritika Chanda

Year: 3rd

Major: Neuroscience w/ HMED and Leadership Studies
Minors

Involvements: AMSA, Cognitive Neuroscience research at Dr. Schumacher's CoNTRoL lab, ATL Tanishq, Clinical Caller for HelplineSOS, Medical Intern at the Good Samaritan Health Center, Volunteer at WellStar AMC, Representative on SGA's Student Healthcare Council

My Role: Coordinate and organize the operations of SHC, Represent SHC in various Pre-Health committees, Support the SHC Executive Board in their roles and members in their future endeavors, Co-lead SHC HelplineSOS Outreach Team



Vice President: Ishani Desai

Year: 3rd

Major: Biochemistry

Involvements: AMSA, Honor Advisory Council, Arts in Health Volunteer at Emory, Good Sam Helpline Volunteer, Research with Dr. Lieberman, Red Cross Blood Ambassador

My Role: SHC Senior Support Team Lead, Assist the President and all of the other executive board members in various endeavors



Secretary: Jenna Campbell

Year: 2nd

Major: Neuroscience, minor in Health & Medical Sciences

Involvements: Neuroscience 2001 Lecture TA, Grady Neonatal Intensive Care Unit Volunteer (NICU), Safety Officer and Public Relations Chair of GT Women's Club Volleyball, Mental Health Task Force Chair of the sorority Alpha Chi Omega, Brain Exercise Initiatives (BEI)

My Role: send emails, oversee social media, keep track of points for the semester, update the website, create the Engage roster



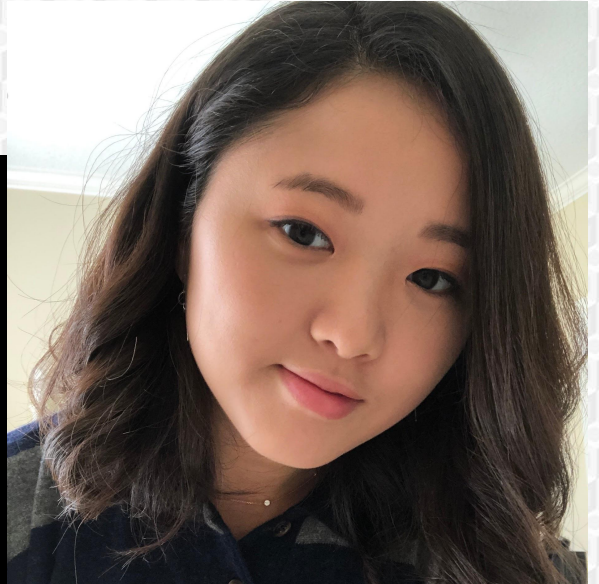
Treasurer: Hannah Shin

Year: 2nd

Major: Biology with Physiology Minor

Involvements: Biology education research with Dr. Colin Harrison, Good Samaritan Helpline Volunteer and Medical intern, Undergraduate Research Ambassadors, GT Tri-Beta, STAMPS Health Services Ambassadors, GT Emergency Medical Services

My Role: Oversee the organization's bank accounts, lead the Events Planning Committee, keep track of membership and dues, manage Rideshare and Reimbursements



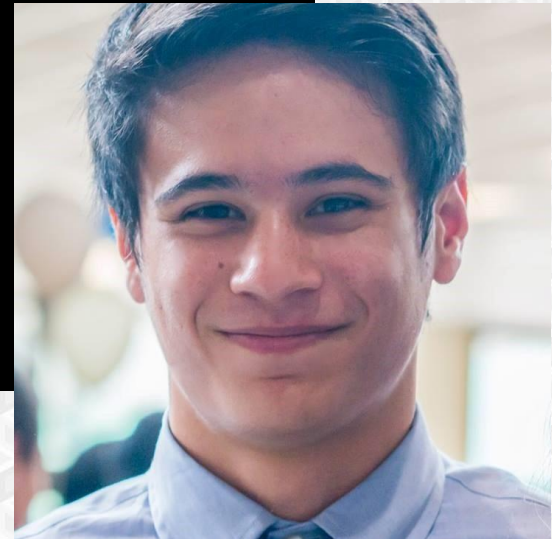
Hospital Coordinator: Patrick Kramer

Year: 3rd

Major: Biology

Involvements: AMSA, Volunteer at Emory Winship, Intern and Clinical Caller at Good Samaritan Health Center, Research in Brown Lab, Intern at Pediatric Brain Tumor Foundation

My Role: Coordinate with volunteer coordinators to get SHC members volunteer positions at each hospital & co-lead the SHC HelplineSOS Outreach team w/ Ritika



Fundraising Chair: William York

Year: 3rd

Major: BME with Pre-Health and Research Option Minors

Involvements: GT EMS, GT APSA, URA, Grand Challenges, ASB, GT Red Cross, Club Baseball, SHS Ambassadors, and Research with Dr. Botchwey

My Role: I work with the fundraising committee to host various events to help support our members hospital volunteering travel reimbursements



Today's Meeting Agenda



VOLUNTEERING



COMMITTEES & TEAMS



PROGRAMS



GOOD STANDING



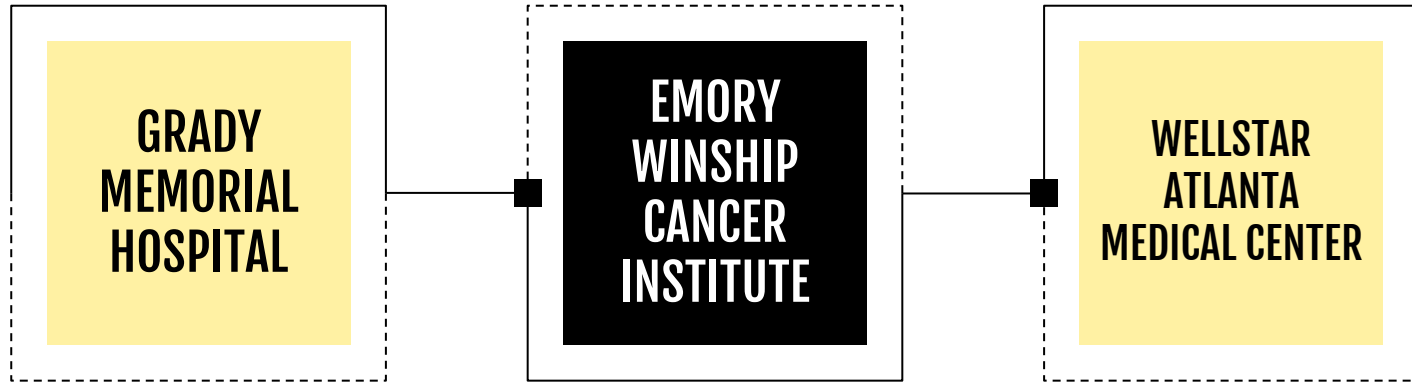
DUES



GETTING INVOLVED

Our Hospitals

EMORY
HEALTHCARE



Volunteering Requirements: Grady, AMC, Emory

- Must be 18 years or older to volunteer at Grady, AMC or Emory
- Must submit all required paperwork
- Must adhere to respective hospital policies and remain in assigned departments
- Must volunteer 3-4 hours per week (GRADY and AMC) and 8 hours per month (EMORY)
- Must complete minimum 21 hours of volunteering by the end of the semester that you start volunteering
 - If absent, notify respective hospital coordinators in advance (and anyone else required at the hospital)
 - Member who do not communicate adequately and complete their volunteer hours will be placed on the blacklist in subsequent semesters.

NOTE: THIS IS FOR A NORMAL SEMESTER WHEN HOSPITALS ARE OPEN! MORE ON VOLUNTEER HOUR REQUIREMENT FOR SPRING 2020 LATER IN THE MEETING.

Applying: Grady, AMC, and Emory

- Each hospital has slightly different applications, but expect:
 - An application with basic information and short essays
 - An interview
 - Orientation
 - Proof of vaccinations
- Other requirements depending on hospital:
 - Medical release
 - Background checks
 - Privacy compliance training
- **Be ready for hospital volunteering to open back up!**
 - Have immunizations, release forms, resumes, etc. ready to go!
- **Visit our website for detailed instructions for individual requirements and how to apply!** <http://gtshc.weebly.com/>

Grady Volunteering

- Grady has a wide range of departments that need volunteers including but not limited to:
 - Language
 - Cancer Center
 - Nursing Units
 - Food in Medicine
- General volunteer roles include:
 - Fulfilling patient requests
 - Assisting nurses
 - Escorting, running
 - Clerical and inventory work
- **The longer you volunteer, the more involved the nurses and doctors will let you be!**
- Click here for more details: <http://qtshc.weebly.com/grady-volunteering.html>



AMC Volunteering

- AMC has a wide range of departments that need volunteers including but not limited to:
 - Integrative Health
 - Comfort Advocacy
- General volunteer roles include:
 - Clerical shifts
 - Running lab items around the hospital
 - Comfort card rounding
 - Planning events
 - Assisting Nurses with their non-medical duties
 - Building connection and improving their skills through their roles
- **The longer you volunteer, the more involved the nurses and doctors will let you be!**
- Click here for more details: <http://gtshc.weebly.com/amc-volunteering.html>



Emory Winship Volunteering

- Emory Winship Cancer Institute has many cancer-related departments including:
 - Radiation Oncology
 - Ambulatory Infusion Center
 - Medical Oncology Clinic
 - Radiology Department
- General volunteer roles include:
 - Hospitality
 - Runner
 - Clerical/Administrative
 - Welcome Desk/Concierge
 - Musicians/Artists
- **The longer you volunteer, the more involved the nurses and doctors will let you be!**
- Click here for more details: <http://qtshc.weebly.com/emory-volunteering.html>



Important Steps When Applying

When you **do** apply:

- It is crucial that you keep everything updated!
 - We will have forms that help us keep track of where you are in the application so that we can pass that along to the volunteer coordinators.
- **You** are responsible for making sure your application, interview, and volunteer etiquette are up to GT and SHC standards.
 - We try to make the process as easy as possible, but SHC only sends the best volunteers, so you *must* show that you are a **passionate** volunteer candidate.
- **Remember to use our website! It has a detailed description of each application process and many other resources!**

<http://gtshc.weebly.com/>

COVID-19 Volunteering

- Hospitals are **not** accepting volunteers right now.
- As of Spring 2021, we have transitioned to Notion! The old document will be phased out this semester.
- SHC has created a living volunteer opportunities page on Notion!
 - Consists of virtual, non-virtual, long-term, short-term, event-based opportunities for volunteering, scribing, internships, etc.
 - Opportunities are sorted based on various categories!
 - Tons of work went into consolidating these opportunities for SHC members **only**.
 - SHC members will get access to the Notion after acceptance and paid dues.
 - If you are a returning member, you must fill out the returning members form and pay dues!
 - Sharing of the content of the Notion page with anyone else (regardless if they are an SHC member) will result in forfeiture of access
- With any in-person volunteering, SHC members are expected to use safe COVID-19 practices. Any volunteering that is SHC affiliated will require members to follow the protocol outlined earlier in the meeting!
- Look into opportunities you are most comfortable with! The list is diverse with that intention in mind!

Our Response to COVID-19



SHC Outreach Team

Aids underserved communities during the 2020 COVID-19 pandemic by helping to improve, regulate, and expand the operations of the HelplineSOS coronavirus support hotline.



Expansion of Opportunities

Shadowing Internships
Training
Other Volunteering



SHC Senior Support Team

A virtual program that connects GT student to senior in various nursing homes launched with the purpose of providing the elderly with emotional support during these trying times.

SHC Outreach Team

01

Testing & Vaccines

Developing and maintaining a testing site and vaccination distribution site database for HelplineSOS.

02

Service

Planning and executing service projects for SHC members!

03

Outreach

Creating and managing virtual volunteering programs at our partner hospitals, Grady, AMC and Emory.

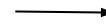
04

Impact

Assessing the impact of HelplineSOS on the Atlanta community through surveys and analysis of trends.

SHC Senior Support Team

If you would like to be a virtual pen pal this semester, please fill out this interest form! (if you filled it out last semester, please go ahead and fill it out again!)



01

Supporting seniors who may be facing feelings of loneliness and isolation due to the COVID-19 pandemic.

02

Providing company and a source of emotional support during these trying times.

03

Expanding to more nursing home and developing new projects to support them.

APPLICATION TO JOIN COMING OUT FALL 2021!

Committees

Want to get more involved
with SHC?

1

FUNDRAISING

Hold fundraising events, proceeds nights, and more to support our reimbursement program and philanthropy events

2

CLINICAL OPPORTUNITIES

Help maintain and expand our connections with volunteering and clinical opportunities in and around the Atlanta area

3

EVENT PLANNING

Plan fun events like socials and panels to engage our members and help them relax!

Fundraising Committee

Increased Reimbursement

Currently, our reimbursement program is only active in the Fall and Spring semesters, but many of our members also volunteer during the Summer semester, so we would like to expand the program to year-long.

Supporting SHC's Philanthropy Projects

SHC believes in supporting our hospitals and communities outside of volunteering and educating our members about issues in healthcare.

**APPLICATION TO JOIN
COMING OUT FALL 2021!**

Clinical Opportunities Committee

Research



Finding volunteer, shadowing, internship, and other clinically relevant opportunities for our members

Outreach



Reaching out to clinics, clubs, and organizations for SHC partnerships and volunteer opportunities

Updates



Updating SHC members on any important information or opportunities at their respective hospital

Organization



Creatively finding ways to make the opportunities list organized and easy to use

**APPLICATION TO JOIN
COMING OUT FALL 2021!**

Event Planning Committee

Socials and Panels

Host events that will allow members to sit back and relax! Socials help members get to know one another and panels provide valuable information for pre-health students (healthcare issues, work-life balance, self-care tips and suggestions).

Member Engagement

Increase member engagement by planning fun activities such as game night and various social events! These are virtual this semester, but we look forward to face to face activities in the future.

**APPLICATION TO JOIN
COMING OUT FALL 2021!**

Our Programs



RIDESHARE

Aims to pair drivers and riders who volunteer at the same places during the same shifts and to help riders identify other riders who they can carpool with to cut costs and ensure full reimbursement



REIMBURSEMENT

Allows riders to receive reimbursements for transportation costs associated with fulfilling clinical opportunities

SHC RideShare Program

- The RideShare program matches drivers and riders going to the same hospital/volunteer event at the same time
 - If no driver is found, riders going to the same hospital/volunteering shift will be matched so that they can share an Uber, Lyft, etc. and apply for reimbursement through our Reimbursement Program
- Interested members should fill out the RideShare form once volunteering opens up
- Cars will be paired by the Hospital Coordinator, and each member is expected to not hold up others, communicate any schedule changes, and adhere to the driver's car rules
 - *Failure to adhere to the RideShare rules will result in removal from the RideShare program*
- **The Rideshare program is suspended (with some exceptions for SHC group volunteering events in Spring 2021).**
 - Arrangements for group volunteering may be made for *limited* ridesharing (ex. roommates, friends, etc.) → Reach out to Patrick (Hospital Coordinator) if interested to coordinate!

SHC Reimbursement Program

- The reimbursement program allows you to get reimbursed for rides to and from hospital/volunteering shifts through transportation such as Uber, Lyft, or Marta.
 - This significantly reduces the cost of your rides → these companies charge for vehicles and not the number of passengers
- How to become eligible?
 - At the beginning of each semester, members have the choice of paying \$10 dues for no transportation needed and \$20 dues for transportation needed.
 - You will ONLY be eligible for reimbursement if you pay transportation dues for AT LEAST two semesters. In other words, you will be able to enter the reimbursement program during your 2nd semester of paying the \$20 dues.
 - Due to COVID-19, starting this semester, you may pay the baseline \$10 dues and pay an additional \$10 if you start in-person volunteering (total of \$20 transportation dues) later during the semester.
 - **Must be in Good Standing!** - more on this soon!

Requesting Reimbursements

- Each transportation mode has its own respective form you must fill out to request reimbursements as well as different timelines:
 - Uber/Lyft: \$10 cap per person per week, expect reimbursements during the first week of the month AFTER you submit your request (if request submitted in August, expect your reimbursement the first week of September)
 - RideShare: Drivers receive \$10 per 3 round-trips taking at least one other member, this pays for gas AND rewards drivers for their time in coordinating rides with other members
 - Marta: Paid at once at the end of the semester after submission of the Volunteer Hours Log, \$10 cap per person per week
- We will reimburse you through **Venmo**.
- If you travel in groups or use the RideShare program, only one group member needs to submit for reimbursement and we will distribute reimbursement among all group members!
- For more detailed information, visit this page on our website: [click here](#)

Good Standing – Spring 2021 Update

ACQUIRING POINTS

Earning **at least 3** participation points throughout the semester by attending events or other activities

PAYING DUES

Dues are \$10 for all members this semester; If you need transportation reimbursements or believe you may need it in a future semester, you may add the extra \$10 (totaling \$20 = transportation dues) at any point during the semester.

VOLUNTEERING HOURS

Completing a total of at least 10 hours of volunteering
Can include: clinical, non-clinical, in-person, or virtual

WHY IS GOOD STANDING IMPORTANT?

Maintaining Good Standing allows you to be eligible for reimbursements!

Our “Point” System

01

Point Requirement

Members must maintain 3 “points” per semester.

02

How to Earn Points

A GBM guarantees 1 point! Exec will decide and communicate points for other events.

03

Submit your Points!

Fill out the form on our website under “Resources”.

04

Didn't Get 3 Points?

You can remain in the club, but will need to earn 3 points to be allowed to receive reimbursements again.

Membership Dues – Spring 2021

- Base dues are **\$10 per semester!** This includes a t-shirt, access to membership benefits, volunteer opportunities, and events!
- If you would like to participate in the RideShare and Reimbursement Program, the dues are **\$20 per semester.** This will allow you to request and receive reimbursements for your transportation throughout the entire semester in addition to what we offer in base dues (mentioned above)!
 - Please keep in mind that you **must** have paid the \$20 transportation dues for **AT LEAST 2 semesters** before you are eligible for these programs. They do not have to be 2 semesters in a row (if you were to skip a semester of membership due to internship or co-op or COVID-19, that would be completely fine).
 - **STARTING SPRING 2021:** You can pay base dues (\$10) for membership and add on the extra \$10 later if you need reimbursement or expect you will need it in a future semester!
- Please pay dues to the SHC **Venmo** @GTStudentHospitalConnections
- If you do not have a Venmo, please create an account. We would like to standardize this method of payment in our organization as much as possible.

Volunteer Hours Log

- We are encouraging you to keep track of your hours!
 - Made a template to keep track of your volunteering hours through SHC provided opportunities:
 - Can submit this template for MARTA reimbursements
 - Will need to submit your hours at the end of the semester: **Tuesday, April 27, 2021 by 11:59 PM** (more on submission in the future meetings)
 - **Template:** [click here](#) → Website page where the Volunteer Hours Log is located
- COVID-19 Volunteer hour requirement: **10 hours**

Joining & Getting Involved in SHC New Members

FEBRUARY	WEEK 1	WEEK 2	WEEK 3	WEEK 4
TIMELINE FOR NEW MEMBERS	First GBM & applications go out on Feb. 3!	Applications due Feb. 10!	Application decisions & committee applications go out on Feb. 15!	Dues, waiver & committee applications due Feb. 19!

Scan this code to fill out our **NEW MEMBER Application!**



Application Link: <https://forms.gle/smM8fWohhVyaMMED9>

Joining & Getting Involved in SHC Returning Members

FEBRUARY	WEEK 1	WEEK 2	
TIMELINE FOR RETURNING MEMBERS	First GBM on Feb 3rd!	Returning Member Form and Dues due Feb. 10!	

Scan this code to fill out our **RETURNING MEMBER Form!**



Form Link: <https://forms.gle/SH7F14caEgFwj1sY6>

UPCOMING EVENTS! – February Edition

Fundraising for Mercy Care Atlanta:

- February 22nd - March 3rd!
- All funds raised will be used to purchase and put together food kits for Mercy Care Atlanta's patients
 - Packing Food Kits: March 25th from 6-8 PM (sign up required, more info soon!)

MedShare Group Volunteering:

- February 18th: 9-12 AM (sign up required, more info soon!)
 - New Members who are accepted: must pay dues and submit waiver before signing up!
- February 25th: 9-12 AM (sign up required, more info soon!)

Potential Event: How to Get Involved in Research w/ URA!

Stay Up-to-Date!



WEBSITE

<http://gtshc.weebly.com/>

Our new and improved website has everything you need to know about being an SHC member, has updates for hospitals, forms you need to fill out, and even some COVID-19 testing resources!

SOCIAL MEDIA

Follow us on social media! We post reminders about meetings and events, volunteer opportunities, and more!

Instagram:
@gatechshc
Facebook:
[Click here!](#)

EMAIL

shcgatech@gmail.com

If you have any questions about SHC and our involvements, feel free to reach out to us!

ENGAGE PAGE

[Click here!](#)

Our updated Engage page will house information about our events, links to our social media, applications, etc!

CALENDAR: [Click here](#) to add it onto your personal calendar!